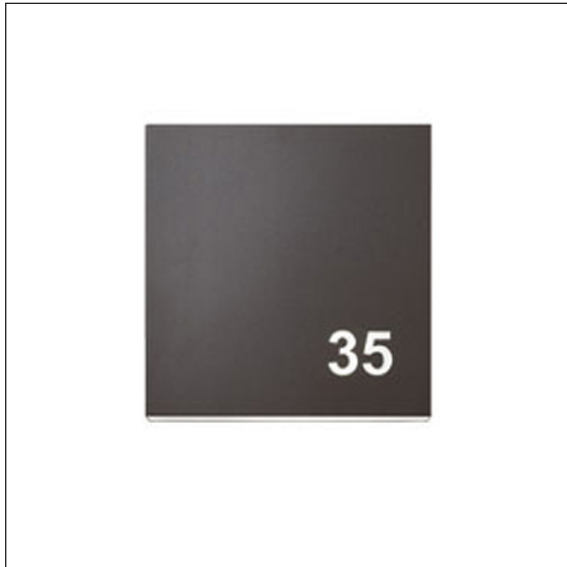


# Square 250 - exterior

Design: schmidt hammer lassen design



With light slits at the top and bottom, Square offers a soft light without glaring. The downwards light is dominant due to the position of the lamps.

In case of interior use Square can be turned upside down, but when used outdoors the correct orientation is important due to drainage of moisture.

Square is available with shaded top and downward light only.

Characters and symbols can be cut out in the front, resulting in clear signage even at darkness.

#### Dimensions:

250x250 and 270x270 mm

#### Finish:

White RAL 9010, shine 30  
Black Noir 900 Sablé or RAL 9005, shine 30  
Graphite grey YW355F  
Corten brown YX355F  
Brushed copper  
Galvanised

#### Lamp types:

LED Bridgelux  
E27 base



FOCUS-LIGHTING

# Square Bollard

Design: schmidt hammer lassen design



With light slits at the top and bottom, Square offers a soft light without glaring. The downwards light is dominant due to the position of the lamps.

In case of interior use Square can be turned upside down, but when used outdoors the correct orientation is important due to drainage of moisture.

Square is available with shaded top and downward light only.

Characters and symbols can be cut out in the front, resulting in clear signage even at darkness



#### Dimensions:

Fixture: 250x250 mm

Bollard: H 1100 mm

#### Finish:

Galvanised, option for powder coating in black, graphite grey, or corten brown.

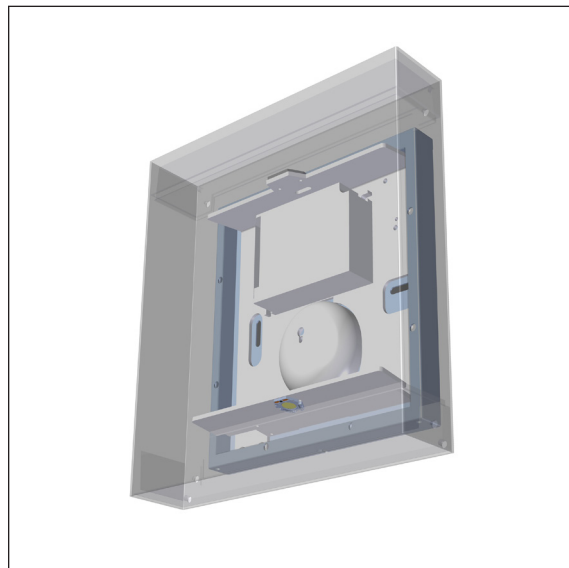
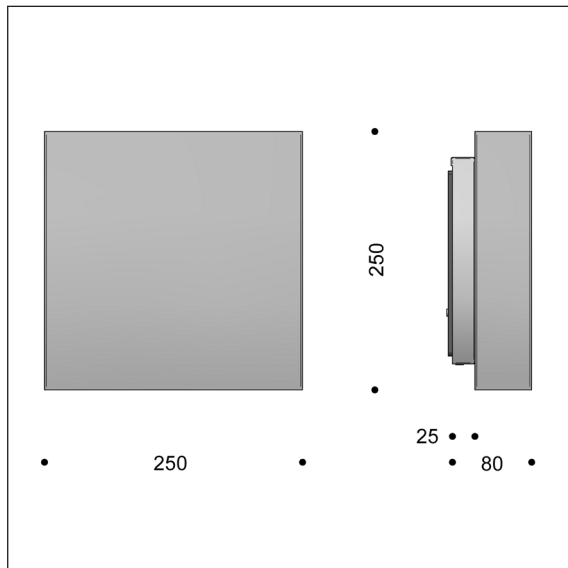
#### Lamp type:

LED

E27

# Square 250 - exterior - LED

Design: schmidt hammer lassen design



## Luminaire specification:

Material:	Steel, galvanised or coated, or copper. Copper will be brushed; can be polished upon request.
Finish:	Graphite grey: YW355F White: RAL 9010, gloss 30 Black: Noir 900 Sablé or RAL 9005, gloss 30 Corten brown: YX355F
Screen:	Polycarbonate, opalised
Cutting in front:	Digits can be cut out in the front. See specification below. Cuttings in galvanised units may have minor irregularities.
Mounting:	On wall or wall box
Connection:	Max two cables into 5 x 2,5 mm <sup>2</sup> terminal block
Classification:	IP45, class I, class II optional, IK09
Weight:	2 kg

## Lamp and driver specification:

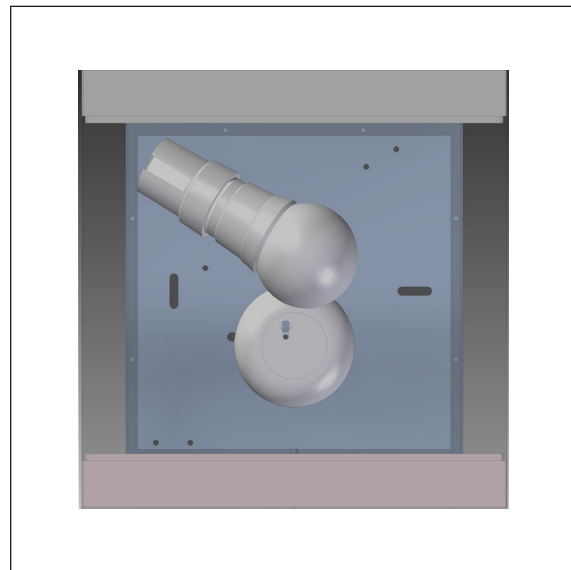
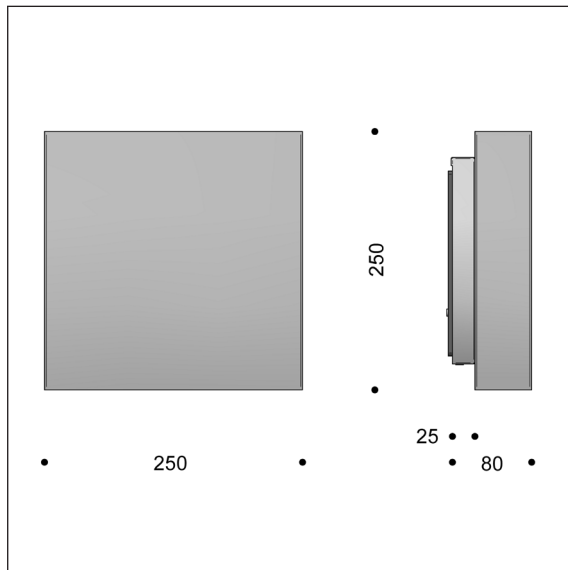
LED type:	Bridgelux Vero 10 + V6
Total consumption:	10 or 15 W
Downwards only:	Bridgelux Vero 10
Total consumption:	8 or 12 W
Service life:	100,000 hours at t <sub>a</sub> max 25°, L90B10
Colour temperature:	2700, 3000, or 4000 Kelvin
Energy eff. class:	F
Colour rendering:	min 90 Ra
Output ratio:	53 per cent
Driver:	20 W LED driver, dimming optional
Service life:	min 100,000 hours

## Product codes:

SQUARE 250 with Bridgelux LED										
Item No.	Lamp type		Select colour, colour temperature, dimming, etc. in the table below.							
6828-	10 W Bridgelux Vero 10 + V6, 250 mA									
6820-	15 W Bridgelux Vero 10 + V6, 350 mA									
6829-	8 W Bridgelux Vero 10, 250 mA, downwards only									
6826-	12 W Bridgelux Vero 10, 350 mA, downwards only									
Combine with:	Colour	Colour temperature	Dimming		Class II		Laser cutting in front			
	1 white RAL 9010	927 2700 K, 90 Ra	V	1-10 V	empty	class I	empty	no cutting		
	3 black RAL 9005	930 3000 K, 90 Ra	D	Dali	K	class II	C	digits in front		
	4 graphite grey	940 4000 K, 90 Ra	R	bluetooth sensor						
	8 copper									
	9 galvanised									
	17 corten brown									
	66 black noir 900									
Example:	6828-66927V = Square 250, black noir 900, 10 W LED, 2700 K, 90 Ra, 1-10 V dimming									

# Square 250 - exterior- E27

Design: schmidt hammer lassen design



## Luminaire specification:

- Material:** Steel, galvanised or coated, or copper.  
Copper will be brushed; can be polished upon request.
- Finish:** Graphite grey: YW355F  
White: RAL 9010, gloss 30  
Black: Noir 900 Sablé or RAL 9005, gloss 30  
Corten brown: YX355F
- Screen:** Polycarbonate, opalised
- Cutting in front:** Digits can be cut out in the front. See specification below. Cuttings in galvanised units may have minor irregularities.
- Mounting:** On wall or wall box
- Connection:** Max two cables into 5 x 2,5 mm<sup>2</sup> terminal block
- Classification:** IP45, class I, class II optional, IK07
- Weight:** 2 kg

## E27:

- Lamp type:** 13 W LED, Philips Core Pro or other E27 type, max 30 W, max Ø60 x 120 mm
- Operational life:** 15,000 hours
- Colour temperature:** 3000 K
- Colour rendering:** 80 Ra
- Output ratio:** 20 per cent

## Product codes:

Item No.		Lamp type	Select colour in the table below.					
6002-		13 W LED, Philips Core Pro or alike, max 30 W						
6006-		downwards, max 30 W						
Combine with:	Colour							
	1 white RAL 9010							
	3 black RAL 9005							
	4 graphite grey							
	8 copper							
	9 galvanised							
	17 corten brown							
	66 black noir 900							
Example:	6002-1 = Square 250, white, E27							